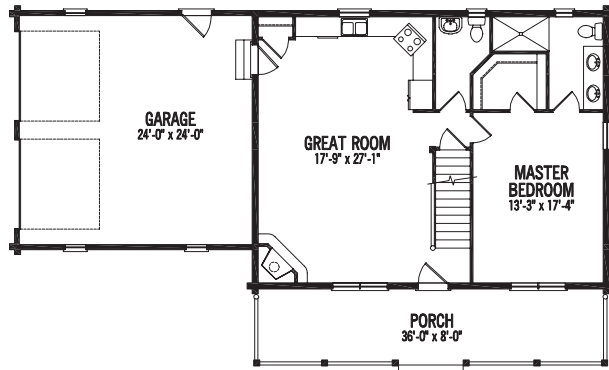


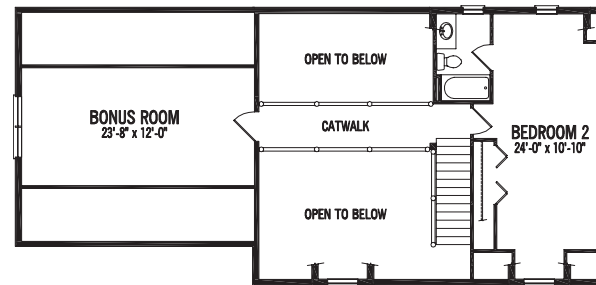
The WOODBIDGE

The "wood bridge," or catwalk, provides access to a large bonus room and defines the living space on the main level. A nice-sized master bedroom is located on the first floor.

Rooms:	Square Footage:
2 Bedrooms	1,008 First Floor
2.5 Baths	800 Second Floor
	1,808 Total



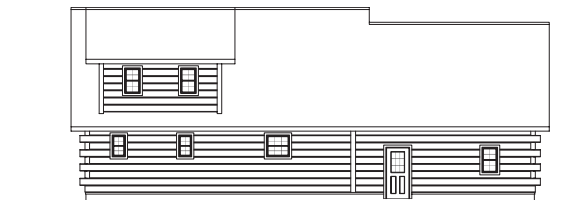
FIRST FLOOR



SECOND FLOOR



LEFT ELEVATION



REAR ELEVATION



STRONGWOOD
LOG HOME
COMPANY

© 2007 Strongwood Log Home Company.